

Method Statement

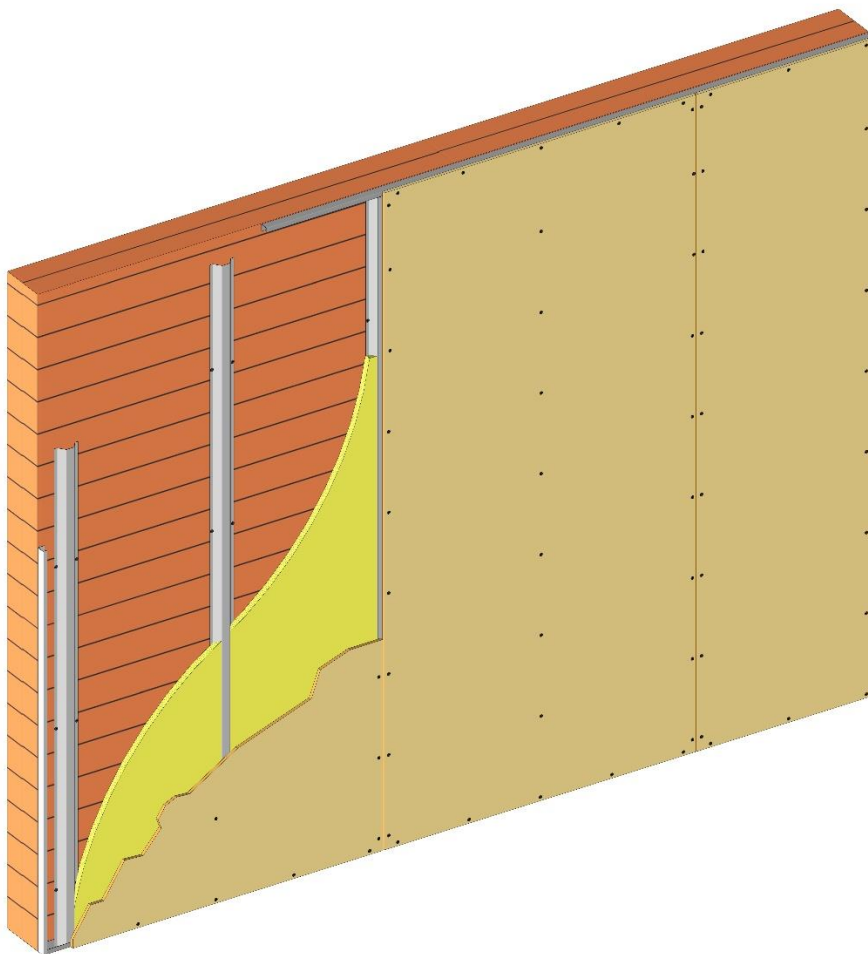
Purpose and Scope

The Method statement describes the working procedure for Assembling of Everest Wall Lining application. This will include for the preparation for Frames, Bracing, Boarding of Wall Lining. The purpose of this Method Statement for Wall Lining application is to outline and describe in detail the procedure, material and tools required to undertake the work or activity in a safe and controlled manner. Purpose of the method statement is to follow best construction methods to provide best quality of work.

Description of Work

The work involves the Installation of Everest Wall Lining application as per the specification.

Application Drawing:



Material and Tools required

Material List:

1. Everest Fibre Cement Board
2. Everest Fibre Cement Screws
3. Perimeter Channel
4. W Profile
5. Nylon Sleeve with steel screws
6. Fibre Mesh Tape
7. Everest Jointing Compound

Tools and Machinery List:

1. Measuring tape
2. Drilling Machine
3. Hammer drill machine
4. Circular Saw
5. Grinding Machine
6. Metal channel cutter
7. Spirit level & Plumb bob
8. Hammer & Screw driver Set
9. Sealant Gun
10. Right angle
11. Putty Knife
12. Plier

Preparation

1. Prior to work commencement, final approved (GFC – good for construction) drawing in coordination with Site Engineer need to be considered for Installation.
2. Erect scaffolding and access platform in accordance to safety procedures
3. Delivered materials should be verified by the QA/QC Engineer prior to installation
4. Store materials in dry area out of direct sun light and as directed by the material manufacturer.
5. Safety protocol to be followed during Installation.

Material Storage and Handling Guidelines

1. Board should always be carried on long edges (width wise) by two to three persons to avoid the damage to board and excessive strain on people handling them.
2. Board should be properly lifted while handing and not to be lifted by corners. Also, it should not be dragged over each other to avoid scratches specifically for the designer board / finished product.
3. Board should be stacked flat, fully protected and covered during storage at sites.

Installation Procedure

Step 1 – Wall selected for Wall Lining application should be in level, dry and should be cleaned prior to installation.

Step 2 – Fix G.I perimeter channels of 0.55mm thick (having one flange of 20mm and another flange of 30mm and web of 27mm) along the perimeter of the wall, screws fixed to the brick wall/partition with the help of nylon sleeves and screws or PVC dash fasteners at 600mm c/c.

Step 3 – Then Ceiling section/W Profile of 0.55mm thickness having knurled web of 51.5mm and two flanges of 26mm each with lips of 10.55mm are then fixed on to the wall with the help of screws and nylon sleeve in vertical positions at 600mm c/c and in horizontal position at 1200mm c/c to form the grid of 600 x 1200mm.

Step 4 –Beveled Everest Fiber Cement Board / Everest Heavy Duty Board is fixed to the ceiling section with 25mm self-drilling, self-tapping countersunk Everest fiber cement screws at 300mm c/c.

Step 5 - Minimum distance of Everest Board screws from edge shall be 15mm and that from the corner shall be 50mm.

Step 7 - Self-adhesive Fibre tape to be applied at beveled joints for Jointing and finishing of the boards. Jointing compound needs to be applied in three stages as per the standard application procedure.

Step 8 - Counter sunk Everest Board Screws are embedded inside the board surface by 0.5 to 1mm which is then covered with Jointing Compound to get the concealed screw finish.

Step 9 – All openings and cutouts for service line in wall lining to be completed during installation prior to jointing and finishing.